



SUPPLEMENT ARTICLE

Performance of prognostic markers in the prediction of wound healing or amputation among patients with foot ulcers in diabetes: A systematic review

Rachael O. Forsythe¹  | Jan Apelqvist² | Edward J. Boyko³ | Robert Fitridge⁴ | Joon Pio Hong⁵ | Konstantinos Katsanos⁶ | Joseph L. Mills⁷ | Sigrid Nikol⁸ | Jim Reekers⁹ | Maarit Venermo¹⁰ | R. Eugene Zierler¹¹ | Nicolaas C. Schaper¹²  | Robert J. Hinchliffe¹³

¹British Heart Foundation/University of Edinburgh Centre for Cardiovascular Science, University of Edinburgh, Edinburgh, UK

²Department of Endocrinology, University Hospital of Malmö, Malmö, Sweden

³Seattle Epidemiologic Research and Information Centre, Department of Veterans Affairs Puget Sound Health Care System and the University of Washington, Seattle, Washington

⁴Vascular Surgery, The University of Adelaide, Adelaide, South Australia, Australia

⁵Department of Plastic Surgery, Asan Medical Center University of Ulsan, Seoul, Korea

⁶Department of Interventional Radiology, Patras University Hospital School of Medicine, Patras, Greece

⁷SALSA (Southern Arizona Limb Salvage Alliance), University of Arizona Health Sciences Center, Tucson, Arizona

⁸Department of Clinical and Interventional Angiology, Asklepios Klinik St. Georg, Hamburg, Germany

⁹Department of Vascular Radiology, Amsterdam Medical Centre, Amsterdam, The Netherlands

¹⁰Helsinki University Hospital, University of Helsinki, Helsinki, Finland

¹¹Department of Surgery, University of Washington, Washington

¹²Division of Endocrinology, MUMC+, CARIM and CAPHRI Institute, Maastricht, The Netherlands

¹³Bristol Centre for Surgical Research, University of Bristol, Bristol, UK

Correspondence

Rachael O. Forsythe, British Heart Foundation/University of Edinburgh Centre for Cardiovascular Science, University of Edinburgh, Edinburgh, UK.
Email: rachael.forsythe@ed.ac.uk

Abstract

Clinical outcomes of patients with diabetes, foot ulceration, and peripheral artery disease (PAD) are difficult to predict. The prediction of important clinical outcomes, such as wound healing and major amputation, would be a valuable tool to help guide management and target interventions for limb salvage. Despite the existence of a number of classification tools, no consensus exists as to the most useful bedside tests with which to predict outcome. We here present an updated systematic review from the International Working Group of the Diabetic Foot, comprising 15 studies published between 1980 and 2018 describing almost 6800 patients with diabetes and foot ulceration. Clinical examination findings as well as six non-invasive bedside tests were evaluated for their ability to predict wound healing and amputation. The most useful tests to inform on the probability of healing were skin perfusion pressure ≥ 40 mmHg, toe pressure ≥ 30 mmHg, or TcPO₂ ≥ 25 mmHg. With these thresholds, all of these tests increased the probability of healing by greater than 25% in at least one study. To predict major amputation, the most

useful tests were ankle pressure < 50 mmHg, ABI < 0.5, toe pressure < 30 mmHg, and TcPO₂ < 25 mmHg, which increased the probability of major amputation by greater than 25%. These indicative values may be used as a guide when deciding which patients are at highest risk for poor outcomes and should therefore be evaluated for revascularization at an early stage. However, this should always be considered within the wider context of important co-existing factors such as infection, wound characteristics, and other comorbidities.

KEYWORDS

amputation, diabetes, diabetic foot, ulcer, peripheral artery disease, prognosis

1 | INTRODUCTION

The presence of peripheral artery disease (PAD) constitutes a significantly increased risk of failure to heal and major lower limb amputation in persons with diabetes and a foot ulcer.¹ PAD is a variable disease in terms of its distribution and severity. It is well recognized that patients with diabetes exhibit a different pattern of peripheral arterial disease compared with those without diabetes (diffuse, distal disease with high prevalence of medial sclerosis, and poor collateral formation).² Once the diagnosis of PAD is established in these patients,² the next step should be assessment of the severity of the perfusion deficit. There are a number of validated scoring systems that may be used for classification and prognosis of diabetic foot ulcers, and almost all incorporate a component relating to PAD.³ Typically, subjective bedside evaluations (including assessment of pulses or symptoms suggestive of PAD) are combined with non-invasive objective tests that can be used for the assessment of the tissue perfusion deficit to inform the clinician of the healing potential of the ulcer. Different tests are advised, and also, the extent of the perfusion deficit that should be the threshold for subsequent intervention can be a matter of debate. Therefore, it would be useful to be able to identify any specific characteristics of PAD that may be associated with poor outcomes, in order to help decide whether revascularization is likely to be successful or futile, regardless of strategy.

The aim of this systematic review is to update our previous review on the performance of non-invasive bedside tests to predict outcomes in diabetic foot ulceration,⁴ in order to guide the treating clinician as to the likely outcome and help guide management decisions accordingly.

2 | METHODS

2.1 | Search methods

Using the Preferred Reporting Items for Systematic Reviews and Meta-analysis (PRISMA) guidance,⁵ we updated our previous systematic review,⁴ guided by a recent consensus document on updating systematic reviews⁶ and the IWGDF methodology document.⁷ As a start,

the population of interest (P), interventions (I), comparators (C), and outcomes (O) were defined, and clinical questions (PICO) were formulated accordingly. These definitions and PICOs were reviewed for their clinical relevance by the IWGDF Editorial Board and external experts worldwide, from various geographical regions. Final definitions and PICOs are integrated within this paper.

We searched the MEDLINE and EMBASE databases for studies relating to the prognosis of PAD among patients with diabetes and foot ulceration, updating the previous search and therefore capturing any new records published between June 2014 and June 2018 (Appendix A). Two reviewers independently screened the abstracts for inclusion, and a third reviewer adjudicated any conflicts. The full text of screened articles was accessed and assessed for inclusion, and data were then extracted and verified by members of the IWGDF PAD working group.

2.2 | Inclusion/exclusion criteria

We included studies that evaluated non-invasive bedside tests in patients with diabetes and foot ulceration to predict clinical outcomes such as clinical symptoms, signs, or an objective index measure of PAD. Studies were excluded if they evaluated patients with an intact foot or assessed only demographic factors as predictors of outcomes. The clinical outcomes of interest were wound healing and major amputation.

Investigations of reduced perfusion that were considered included clinical examination, ankle and toe pressures/indices, Doppler waveform analysis, transcutaneous oxygen pressure (TcPO₂), laser Doppler imaging, pole test, and objective measures of skin temperature. These tests were considered if reported with a cut-off value or threshold to predict outcomes. Gold standard tests used to diagnose PAD included magnetic resonance angiography (MRA), computed tomographic angiography (CTA), and digital subtraction angiography (DSA).

Studies with insufficient information on the revascularization status of the cohort during follow-up were excluded, as were those with less than 6-month duration of follow-up. Studies that did not report data allowing the calculation of sensitivity and specificity (and associated likelihood ratios) were also excluded.

2.3 | Primary endpoints

The primary endpoints for this review were positive and negative likelihood ratios (PLR and NLR) for healing and major amputation. Likelihood ratios are used to express a change in odds of reaching an outcome, in the context of a known pretest probability of disease (ie, knowledge or estimation of the prevalence of disease in the studied population). The PLR gives the change in odds of experiencing an outcome if the test is positive, whereas the NLR expresses a change in odds of experiencing an outcome if the test is negative.

A PLR or NLR of 1.0 means that the test does not change the probability of the outcome over and above the pretest probability and therefore is not a useful prognostic test. As a general rule of thumb, a test is considered to have very good performance if $PLR \geq 10$ (representing an increased probability of the specified outcome by around 45% in the presence of a positive test result) and $NLR \leq 0.1$ (representing a decrease in the probability of the specified outcome of around 45% in the presence of a negative test result).^{8,9} The higher the PLR, the greater the ability of the test to rule in the outcome of interest, while a smaller NLR reflects better ability of the test to rule out the outcome. The practical application of this is to identify the most useful bedside tests that will inform the health care professional as to the probability, or not, of the patient experiencing healing or major amputation (Table 1).

Data were analysed as univariable associations of PAD markers with clinical outcome because of the many factors affecting the likelihood of healing and major amputation. While we recognize the importance of other confounding factors on clinical outcome, we lacked individual patient data from which to adjust our analyses for them.

2.4 | Data extraction and quality assessment

Data extraction was undertaken and independently verified by two reviewers. Methodological quality was assessed using the Quality in Prognosis Studies (QUIPS) tool. Studies were rated as low quality (0) in which case they were excluded, acceptable (+), or high quality (++). The populations evaluated were heterogeneous, as were the outcomes reported and prognostic tests used; therefore, no meta-analysis was undertaken. Instead, measures of test performance were presented for each prognostic test used and summarized within and across studies. Where not explicitly reported, sensitivity/specificity, PLR, and NLR were calculated from the available data and reported in the data table. The median and

TABLE 1 Interpretation of likelihood ratios and their effect on probability of disease¹⁰

High Likelihood Ratios	Low Likelihood Ratios	Interpretation—Affect on Ability to Rule in/Rule out Disease
>10	<0.1	Large
5-10	0.1-0.2	Moderate
2-5	0.2-0.5	Small
1	1	No change

range of summary statistics, including estimates of predictive performance, are presented, stratified by index test and population studied.

2.5 | Evidence statements

We drew conclusions for each intervention based on the strength of the available evidence and summarized this as evidence statements with accompanying assessment of the quality of the evidence, according to GRADE.¹¹

3 | RESULTS

3.1 | Search results

In the search performed for our previous systematic review, 9476 studies were screened (published between 1980 and 2014), which resulted in total of 11 observational studies reporting data from 5890 patients with diabetes and foot ulcer. Our updated search included papers published between June 2014 and June 2018. Our initial search yielded 9068 titles of which three observational studies (comprising in excess of 900 patients with diabetes) and one systematic review/meta-analysis ultimately met the inclusion criteria. Therefore, after including 11 studies from our previous review,⁴ a total of 15 studies were included in the qualitative data table for this updated review, comprising almost 6800 patients (Table 2). One of these studies was the systematic review of Wang et al from 2016 that had less stringent inclusion criteria and that had a larger number of studies included compared with the current review. For comparison, we included this study.²³ A PRISMA flow diagram illustrating the search strategy is included in Figure 1.

3.2 | Patient demographics

The mean or median age of the cohort studies ranged between 58 and 76 years, while the proportion of men was between 57% and 74%. Thirteen studies reported exclusively on patients with diabetic foot ulceration,²³⁻²⁶ whereas two studies included a mixed cohort of patients of which at least 80% of patients had diabetes.^{16,18} One study investigated the prognostic performance of PAD measures in patients with foot infection and/or ischaemia (Fontaine III/IV).¹⁶ Severity of ulceration was assessed in six studies, and the proportion of patients with Wagner grade ≥ 3 ranged from 16% to 61%. Seven studies did not report on ulcer severity^{12,17,18,20,22,24,23}

3.3 | Revascularization

In those studies reporting it, revascularization rates ranged from 5% to 100%, with angioplasty (34%) more frequently used than open revascularization (21%). Four studies excluded patients who underwent revascularization.^{14,17,20,26}

TABLE 2 Evidence table of all papers included in systematic review

Reference	Study Design & Setting	Population (Age, Sex, Comorbidity, Number [Proportion] with DM)	Ulcer Characteristics & Revascularization Data	Diabetic Foot Ulcer Outcome Definition	Relative Risk of the Outcome (95% CI) for Index Measurement of PAD	Test Performance Characteristics for the Outcome (Sensitivity, Specificity, PLR, NLR)	Quality Assessment	Comment/Opinion
Apelqvist ¹²	Prospective cohort study Secondary care Median follow-up 2 y (range 0.5-2.0)	1151 DFU with toe pressure < 45 mmHg OR ankle pressure < 80 mmHg OR nonpalpable foot pulses (with Wagner 4-5 OR rest pain); mean age 75 (range 40-92); 61% male; median HbA1c 7.6 (range 3.6-16.0); 69% on insulin therapy	Ulcer severity not reported 505 (44%) underwent revascularization (angioplasty OR surgery)	Healing (primary healing without major OR minor amputation)	Measurable ankle pressure (compressible arteries): 1.12 (0.80-1.55)	Sensitivity 91%; specificity 10%; PLR 1.02; NLR 0.86	++	Analysis by patient 801 (70%) underwent angiography of whom 63% underwent revascularization (39% PTA 39% and 24% surgery).
Elgzyri ¹³	Prospective cohort study Secondary care Median follow-up 10 mo (IQR 5-16)	478 DFU with systolic toe pressure < 45 mmHg OR ankle pressure < 80 mmHg; median age 74 (IQR 66-80); 60% male; median HbA1c 7.8 (IQR 6.2-9.0); median duration DM 15 y (IQR 10-24)	21% Wagner ≥ 3 All patients were revascularized: 315 (66%) PTA, 163 (34%) surgery	Healing (primary healing OR healing after a minor amputation)	Intermittent claudication: 1.25 (1.16-1.36)	Sensitivity 39%; specificity 75%; PLR 1.59; NLR 0.81	++	Analysis by patient Toe pressure < 45 mmHg in 78%; ankle pressure < 80 mmHg in 43%
Elgzyri ¹⁴	Prospective cohort study Secondary care Median follow-up 7.5 mo (range 0-69)	602 DFU with toe pressure < 45 mmHg OR ankle pressure < 80 mmHg; median age 76 (range 36-95); 60% male; median HbA1c 7.4 (range 3.6-15.0); median duration DM 15 y (range 0-61)	During follow-up, 53% of patients were Wagner grade ≥ 3 No patient underwent revascularization	Healing (primary healing OR healing after minor amputation)	Ankle pressure > 50 mmHg: 1.60 (1.04-2.47) Toe pressure > 30 mmHg: 1.13 (0.96-1.33)	Sensitivity 93%; specificity 14%; PLR 1.08; NLR 0.48 Sensitivity 55%; specificity 51%; PLR 1.12; NLR 0.88	+	Analysis by patient 42% of patients had no claudication or rest pain
Gershater ¹⁵	Prospective cohort study Secondary care Duration of follow-up not reported	2511 DFU; mean age 68 ± 15; 59% male; median duration DM 16 y (range 0-70); T1DM 18%; T2DM 82%; insulin 62%	10% Wagner grade 3; 6% Wagner grade 4-5 8% previous vascular surgery; revascularization rates during follow-up not reported	Primary healing (intact skin for 6 mo OR at time of death) Major amputation (amputation above the ankle)	Ankle pressure ≥ 80 mmHg: 2.67 (2.41-2.97) Ankle pressure ≥ 50 mmHg: 3.31 (2.71-4.05) Toe pressure ≥ 45 mmHg: 2.86 (2.62-3.12) Toe pressure ≥ 30 mmHg: 1.85 (1.61-2.14) Ankle pressure < 80 mmHg: 2.26 (1.71-2.97) Ankle pressure < 50 mmHg: 1.29 (0.92-1.80) Toe pressure < 45 mmHg: 2.98 (2.28-3.91) Toe pressure < 30 mmHg: 3.24 (2.48-4.24)	Sensitivity 84%; specificity 67%; PLR 2.52; NLR 0.24 Sensitivity 95%; specificity 35%; PLR 1.46; NLR 0.15 Sensitivity 80%; specificity 81%; PLR 4.30; NLR 0.25 Sensitivity 90%; specificity 30%; PLR 1.28; NLR 0.33 Sensitivity 39%; specificity 79%; PLR 1.89; NLR 0.77 Sensitivity 20%; specificity 84%; PLR 1.25; NLR 0.95 Sensitivity 55%; specificity 73%; PLR 2.05; NLR 0.62 Sensitivity 40%; specificity 85%; PLR 2.64; NLR 0.71	+	Analysis by patient Of patients with rest pain (n = 664), 44% healed without any amputation In multiple regression analysis, primary healing was related to the extent of PAD in the whole cohort but not among purely neuropathic ulcers. Amputation among patients with neuroischemic ulcers was also related to extent of PAD after controlling for other factors.

(Continues)

TABLE 2 (Continued)

Reference	Study Design & Setting	Population (Age, Sex, Comorbidity, Number [Proportion] with DM)	Ulcer Characteristics & Revascularization Data	Diabetic Foot Ulcer Outcome Definition	Relative Risk of the Outcome (95% CI) for Index Measurement of PAD	Test Performance Characteristics for the Outcome (Sensitivity, Specificity, PLR, NLR)	Quality Assessment	Comment/Opinion
Bunt ¹⁶	Prospective cohort study Secondary care 2-y study period; follow-up duration not reported	147 patients; 90% DM	All had pedal wound sepsis or Fontaine III/IV ischemia 46% underwent revascularization	Healing (primary healing or healing after a minor amputation/debridement procedure)	Palpable pedal pulses: 2.26 (2.05-2.49) Diminished/absent pedal pulses and TcPO ₂ > 30: 1.69 (1.08-2.64)	Sensitivity 35%; specificity 100%; PLR N/A; NLR 0.65 Sensitivity 87%; specificity 46%; PLR 1.60; NLR 0.29	+	Analysis by patient Only those with diminished/absent pedal pulses underwent TcPO ₂ measurement (n = 103) 90 patients had diminished/absent pedal pulses and TcPO ₂ < 30 mmHg of whom 68 were revascularized.
Holstein ¹⁷	Cohort study Secondary care Median time to healing 6.2 mo (range 1-23); follow-up duration not reported	32 DFU; 11 on insulin therapy; mean age 68 y	No ulcer characteristics reported Patients undergoing revascularization excluded	Healing (no definition provided)	Toe pressure ≥ 30 mmHg: 2.43 (1.62-3.64) Ankle pressure ≥ 100 mmHg: 2.00 (2.00-2.00) Skin perfusion pressure ≥ 40 mmHg: 1.88 (1.48-2.39)	Sensitivity 72%; Specificity 100%; PLR N/A; NLR 0.28 Sensitivity 60%; Specificity 100%; PLR N/A; NLR 0.40 Sensitivity 64%; Specificity 90%; PLR 6.40; NLR 0.40	+	Analysis by patient Inclusion criteria specified patients with at least 1-mo duration of ulceration, that is, those with early healing or major amputation were excluded
Wallin ¹⁸	Cohort study Secondary care Duration of follow-up time not reported	83 patients (68 DM) with ulceration or gangrene; mean age 70	Ulcer severity not reported Revascularization performed in four patients	Healing (no definition provided) Major amputation (no definition provided)	Ankle pressure ≥ 70 mmHg: 5.17 (2.08-12.89) Toe pressure ≥ 20 mmHg: 2.65 (1.41-4.97) Fluorescein toe slope ≥ 18 units: 6.40 (2.16-18.98) Ankle pressure < 70 mmHg: 4.53 (2.22-9.26) Toe pressure < 20 mmHg: 3.48 (1.65-7.32) Fluorescein toe slope < 18 units: 3.69 (1.99-6.86)	Ankle pressure ≥ 70 mmHg: Sensitivity 93%; Specificity 71%; PLR 3.24; NLR 0.10 Toe pressure ≥ 20 mmHg: Sensitivity 86%; Specificity 65%; PLR 2.47; NLR 0.21 Fluorescein toe slope ≥ 18 units: Sensitivity 95%; Specificity 62%; PLR 2.47; NLR 0.09 Ankle pressure < 70 mmHg: Sensitivity 65%; Specificity 85%; PLR 4.28; NLR 0.41 Toe pressure < 20 mmHg: Sensitivity 60%; Specificity 81%; PLR 3.18; NLR 0.49 Fluorescein toe slope < 18 units: Sensitivity 58%; Specificity 86%; PLR 4.04; NLR 0.49	+	Analysis by limb The ankle pressure in combination with the toe slope improved prognostic accuracy relative to other predictor variables alone or in combination Analysis by limb
Tsai ¹⁹	Retrospective cohort study Secondary care Duration of follow-up time not reported	97 DFU and dialysis dependence; mean age 65 ± 13 y; 55% male; mean duration DM 18 ± 10; mean HbA1c 7.8 ± 1.6	38% Wagner 3; 23% Wagner 4-5 30% underwent revascularization	Major amputation	Poor monophasic waveform or absence of flow in below knee vessels: OR 7.61 (P = .008)	Sensitivity 88%; specificity 60%; PLR 2.18; NLR 0.20	+	Analysis by patient Poor monophasic waveforms or an absence of flow was detected in 83% of dialysis patients with ABI ≤ 0.90. This waveform criterion also identified 50% of individuals with ABI > 1.40.

(Continues)

TABLE 2 (Continued)

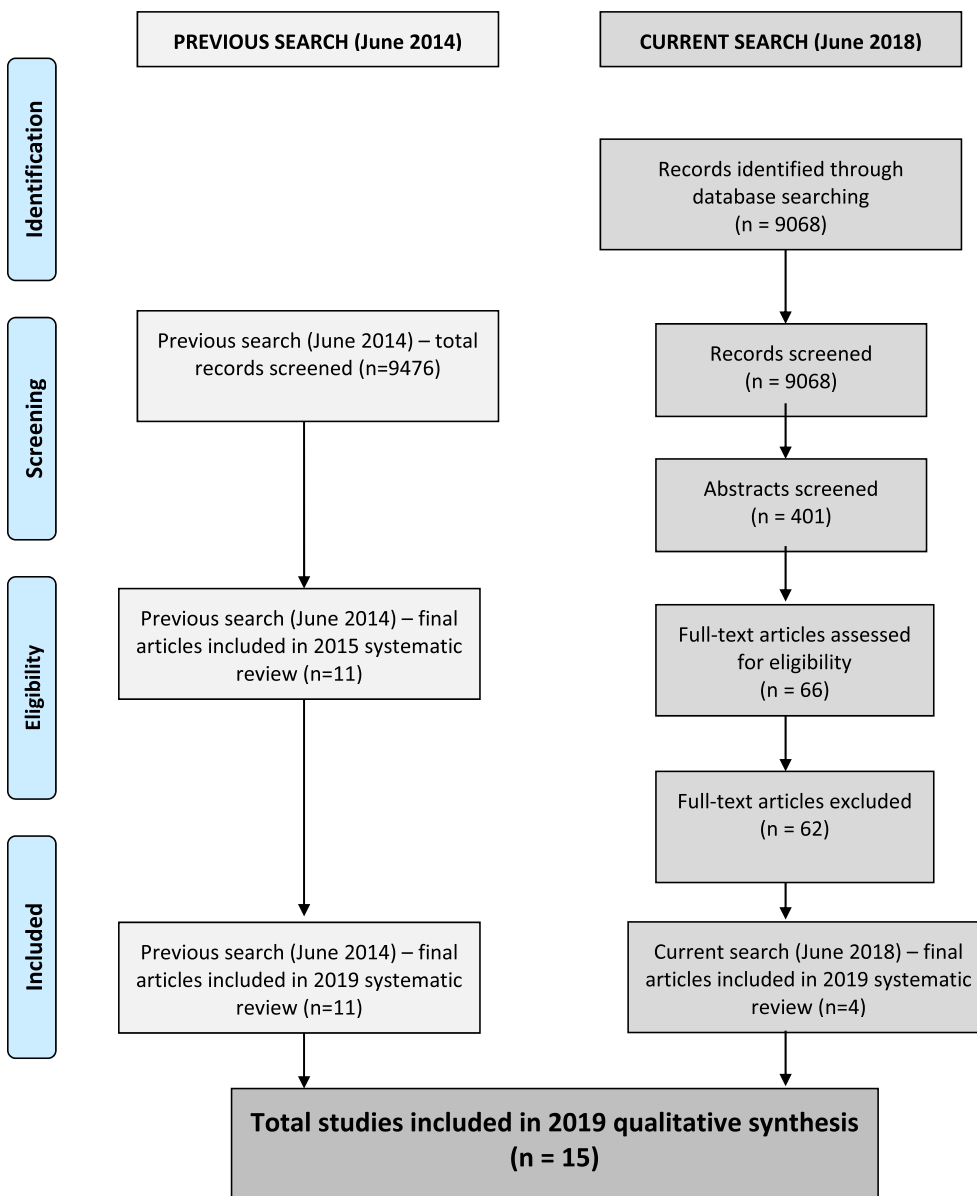
Reference	Study Design & Setting	Population (Age, Sex, Comorbidity, Number [Proportion] with DM)	Ulcer Characteristics & Revascularization Data	Diabetic Foot Ulcer Outcome Definition	Relative Risk of the Outcome (95% CI) for Index Measurement of PAD	Test Performance Characteristics for the Outcome (Sensitivity, Specificity, PLR, NLR)	Quality Assessment	Comment/Opinion
Kalani ²⁰	Prospective cohort study Secondary care 12-mo follow-up duration	50 DFU; 74% male; mean age 61 ± 12 ; DM duration 26 ± 14 y; PAD (defined as toe/arm pressure index <0.6) in 64%; 1 patient with previous bypass.	Severity of ulcers not reported No revascularization procedure as all patients were ineligible for angioplasty/surgery on basis of extensive distal disease and/or increased operative risk	Healing (intact skin)	TcPO ₂ ≥ 25 (no data provided for risk ratio) Toe pressure ≥ 30 (no data provided for risk ratio) Toe pressure ≥ 45 (no data provided for risk ratio)	Sensitivity 85%; specificity 92%; PLR 10.63; NLR 0.16 Sensitivity 15%; specificity 97%; PLR 5.00; NLR 0.88 Sensitivity 46%; specificity 84%; PLR 2.88; NLR 0.64	+	Analysis by patient Systolic ankle blood pressure difficult to measure in 22%
Brechow ²¹	Prospective cohort study of hospitalized patients Secondary care 2-y follow-up duration	678 DFU; mean age 64 ± 11 ; diabetes duration 15 ± 10 ; HbA1c 7.9 ± 3.5	51% Wagner ≥ 3 445 patients underwent angioplasty; 126 underwent arterial reconstruction	Healing prior to discharge Major amputation	ABI > 0.9 and < 1.3 : 2.02 (1.40-2.91) ABI < 0.5 or ankle pressure < 50 mmHg: 25.00 (13.85-41.92)	Sensitivity 12%; specificity 95%; PLR 2.61; NLR 0.92 Sensitivity 87%; specificity 89%; PLR 8.24; NLR 0.14	+	Analyses by patient Patients with MI/stroke in preceding 6 mo, ESRD or active cancer excluded 30% of patients with noncompressible vessels/ ABI > 1.3 /ankle pressure > 200 mmHg included in analyses
Faris ²²	Cohort study Secondary care Follow-up duration not reported	61 DM with ulceration (n = 35) or gangrene (n = 26); median age 72 y (range 38-86); median duration DM 10 y (range 0.5-40)	Ulcer severity not reported 28% underwent surgical revascularization	Healing (primary or after minor/major amputation or after revascularization)	Skin perfusion pressure ≥ 40 mmHg (unable to calculate RR)	Sensitivity 64%; specificity 17%; PLR 4.86; NLR 0.03	+	Analysis by limb Incompressible arteries found in five patients Technical difficulty measuring toe pressures in eight patients
Wang ²³	Systematic review/meta-analysis of clinical trials or observational studies	All patients had DFU. ABI: 20 studies evaluating 2376 patients. TcPO ₂ : 25 studies evaluating 3789 patients. Thresholds: ABI <0.8 ; TcPO ₂ 30 mmHg.	Variably reported	Complete ulcer healing Limb amputation (no definition provided).		ABI ≥ 0.8 : Complete ulcer healing: sensitivity 0.48 (95% CI 0.36-0.61); specificity 0.52 (95% CI 0.42-0.63); DOR 1.02 (95% CI 0.40-2.65). ABI < 0.8 : Limb amputation: sensitivity 0.52 (95% CI 0.49-0.54); specificity 0.73 (95% CI 0.63-0.81); DOR 2.89 (95% CI 1.65-5.05). TcPO ₂ ≥ 30 mmHg: Complete ulcer healing: sensitivity 0.72 (95% CI 0.61-0.81); specificity 0.86 (95% CI 0.68-0.95); DOR 15.81 (95% CI 3.36-74.45). TcPO ₂ < 30 mmHg: Limb amputation: sensitivity 0.75 (95% CI 0.73-0.77); specificity 0.58 (95% CI 0.52-0.64); DOR 4.14 (95% CI 2.98-5.76).	Overall: medium risk of bias but low quality evidence	TcPO ₂ better discriminatory performance to predict complete healing and limb amputation than ABI. Other parameters were reported in this systematic review but not included here as data not able to be pooled.

(Continues)

TABLE 2 (Continued)

Reference	Study Design & Setting	Population (Age, Sex, Comorbidity, Number [Proportion] with DM)	Ulcer Characteristics & Revascularization Data	Diabetic Foot Ulcer Outcome Definition	Relative Risk of the Outcome (95% CI) for Index Measurement of PAD	Test Performance Characteristics for the Outcome (Sensitivity, Specificity, PLR, NLR)	Quality Assessment	Comment/Opinion
Fagher 2018 ²⁴	Retrospective review of prospectively kept database. Secondary care—hospital in Sweden. 1 year follow up.	236 patients with DFU. Mean age 76 (69-82), 69.9% male, CAD 65.3%, smoking 26.2%	No information on ulcer severity. 16.1% revascularization during follow-up.	Healing within 3 mo Major amputation	TcPO ₂ > 25 mmHg: 2.88 (1.43-5.85) TcPO ₂ < 25 mmHg: 5.75 (2.06-16.03)	Sensitivity 0.92, specificity 0.23; PLR 1.21, NLR 0.33 Sensitivity 0.58, specificity 0.83; PLR 3.41, NLR 0.51		Short follow-up for ulcer healing and amputation occurrence (12 wk) Main outcome of the analysis was survival in relation to vascular measurements ABI: Proportion who healed were provided for ABI categories but the number in each category not provided
Jeon 2017 ²⁵	Retrospective review of patient records. Secondary care hospital in Republic of Korea. Follow-up duration not specified	137 patients with DFU. Mean age 61 (SD 12.8), 57.7% male.	39.4% had Wagner III and IV ulcers.	Healing (during an unspecified time period) Any amputation (minor 62 in and major in 5)	ABI ≥ 0.9 Odds ratio 9.07 (3.88, 22.6) ABI < 0.9 Odds ratio 9.01 (3.8, 21.8)	Sensitivity 0.80, specificity 0.69, PLR 2.58, NLR 0.29 Sensitivity 0.69, specificity 0.80, PLR 3.45, NLR 0.39		The analysis compared the ability of 5 different ulcer classification systems to predict amputation. All systems had an AUROC >0.8 ABI data missing in 28 patients
Rajagopalan 2018 ²⁶	Single-centre prospective non-randomized observational study	564 diabetic patients with Wagner II and III foot ulcers Mean age 58.23 ± 10.11 y 380/564 = 67.4% Men	All diabetic patients with Wagner II and III foot ulcers (no breakdown given) Patients who had revascularization were excluded	Healing Major amputation	ABI <0.9 Odds ratio (95% CI) for healing 3.5 (2.2,5.7) TcPO ₂ < 40 Odds ratio for healing 0.733 (0.63,0.84) ABI < 0.90 Odds ratio for amputation 0.51 (0.12,0.22) TcPO ₂ < 40 Odds ratio for amputation 2.99 (2.10,4.25)ing 0.733 (0.63,0.84) Odds ratio for amputation 2.988 (2.099,4.252)	From ROC curves: ABI < 0.6: Sensitivity 99%, Specificity 68% PLR 3.09, NLR 0.01ome of amputation: ABI < 0.6: Sensitivity 68%, Specificity 99% TcPO ₂ < 22.5: Sensitivity 100%, Specificity 75% PLR 3.96, NLR 0.01 (assuming sensitivity of 99%) ABI < 0.6: Sensitivity 68%, Specificity 99% PLR 68, NLR 0.32 TcPO ₂ < 22.5: Sensitivity 75%, Specificity 100% PLR 75, NLR 0.25 (assuming specificity of 99%)	Techniques for measuring ABI and TcPO ₂ not described in detail Excluded patients who had revascularization procedures and patients with nonhealing ulcers at end of study period—selection bias	

^aOnly ABI and TcPO₂ are included from this study. Other parameters were reported in this paper (eg, SPP, TBI, and TBP) but are not included here as data are not able to be pooled.

FIGURE 1 PRISMA flow diagram

3.4 | Prognostic tests evaluated

Only two studies evaluated the use of clinical examination to predict outcome.^{13,16} Ten studies evaluated ABI or ankle pressures,^{12,14-18,21,23-26} other measures of perfusion evaluated were toe brachial index (TBI) or toe pressures,^{14-18,20} TcPO₂ levels,^{16,20,23,24,26} skin perfusion pressure,^{17,22} tibial waveform analysis,¹⁹ and fluorescein toe slope.¹⁸ Two studies provided data on different thresholds of the same investigation,^{15,20} and eight compared data on the performance of multiple modalities^{14-18,20,23,24,26} allowing direct comparison within the same cohorts.

3.5 | Clinical outcomes

13 Table 3 presents clinical outcomes by study. The rate of primary healing varied between 36% and 83%, while the rate of major amputation ranged between 3.6% and 35%. The highest rate of major

amputation (35%) was reported by Tsai et al, who evaluated a high-risk population of patients with diabetic foot ulcer and dialysis-dependent end-stage renal failure.¹⁹

3.6 | PICO: in a person with diabetes, foot ulceration, and PAD, which clinical signs, symptoms, or non-invasive bedside tests may predict wound healing and major amputation?

3.7 | Non-invasive tests to predict wound healing

3.7.1 | Clinical signs or symptoms

Two studies evaluated clinical signs or symptoms of PAD as possible predictors of clinical outcome.^{13,16} Bunt et al conducted a cohort

TABLE 3 Event rates for healing and major amputation by study

Source	N (DFU)	Population	Healing n (%)	Annual Healing	Major Amputation n (%)	Annual Major Amputation Rate
Apelqvist ¹²	1151	DFU	602 (72) (percentage calculated based on 836 patients alive, 310 died with ulcer present)	...	143 (12)	...
Elgzyri ¹³	478	DFU	217 (45)	54%	76 (16)	19%
Elgzyri ¹⁴	602	DFU	227 (38)	61%	NS	...
Bunt ¹⁶	147	Pedal sepsis	NS	...	27 (18)	...
Holstein ¹⁷	32 (35 limbs) ^a	DFU	25 (71)	...	10 (29)	...
Wallin ¹⁸	83 (96 limbs) ^a	DFU OR gangrene	63 (66)	...	33 (34)	...
Kalani ²⁰	50	DFU	20 (40)	40%	4 (8)	8%
Brechow ²¹	678	DFU	NS	...	32 (5)	3%
Faris ²⁷	61	DFU OR gangrene	36 (59)	...	NS	...
Gershater ¹⁵	2511	DFU	1617 (65) healing without minor amputation; 1867 (75) including minor amputations	...	193 (8)	...
Tsai ¹⁹	97	DFU AND dialysis	NS	...	34 (35)	...
Wang ²³	ABI group 2376; TcPO ₂ group 3789.	DFU	NS	NS	NS	NS
Fagher ²⁴	236	DFU	55 (23.1) at 3 months	NS	19 (8.1)	NS
Jeon ²⁸	137	DFU	60 (55)	NS	5 (3.6%)	NS
Rajagopalan ²⁶	564	All diabetic patients with Wagner II and III foot ulcers	470/564 = 83%	NS	Major amputation (above ankle) 62/564 = 11%	Not given.

study that evaluated the predictive value for healing of palpable pedal pulses and TcPO₂ in 147 patients (90% of whom had diabetes) with a foot infection or ischaemia, treated with the same management protocol in a secondary care setting.¹⁶ Healing was defined as primary healing or healing after minor amputation or debridement, with or without revascularization. All 44 patients with readily palpable pulses healed without revascularization, suggesting that palpable pulses could be a strong predictor of healing. In the 103 patients with reduced or no pulses, the TcPO₂ was measured, and those patients with TcPO₂ < 30 all underwent revascularization (46%). The presence of palpable pedal pulses in the whole cohort was associated with higher likelihood of healing (RR 2.26, 95% CI, 2.05-2.49; sensitivity 35%, specificity 100%). The NLR was 0.65, which corresponds to little change in the probability of healing if pulses are absent. All patients with palpable pedal pulses healed. It should be noted that the risk of bias in this one study on the presence of palpable pulses is unclear because of lack of many details.

Elgzyri et al undertook a prospective cohort study of 478 people with DFU who had toe pressure < 45 mmHg or ankle pressure < 80 mmHg,¹³ who underwent revascularization (66% endovascular, 34% open surgery). The primary focus of the paper was time to revascularization, and they reported that patients who underwent revascularization within 8 weeks of referral were more

likely to heal (HR 1.96; 95% CI, 1.52-2.52, *P* < .001). In addition, those with intermittent claudication appeared to have an increased likelihood of healing (HR 1.64; 95% CI, 0.26-2.13; *P* < .001). No explanation for this finding was given; however, the presence of intermittent claudication does not appear to be a useful prognostic measure given a PLR of 1.59 and a NLR of 0.81. A limitation of this study is that the tests were performed in patients with the most severe ischaemia.

Neither of the two aforementioned studies compared clinical examination with objective measures of perfusion; hence, their accuracy in detecting ischemia is unknown.

3.7.2 | Ankle pressure or ankle brachial index

In studies evaluating ankle pressure, using a threshold of greater than 50 mmHg produced a PLR for wound healing between 1.08 and 1.46, meaning that there is almost no improvement on the probability of healing when the ankle pressure is above this threshold. Increasing the threshold to greater than or equal to 70 or greater than or equal to 80 mmHg improved the PLR to 2.52-3.24, which represents a minor increase in the probability of healing. However, in one study, using a value of greater than or equal to 70 mmHg achieved an NLR

TABLE 4 Characteristics of included studies evaluating PAD measures for healing

Source	N (DFU)	Proportion Men (%)	Age (y) Mean (SD) or (Range)	Population	Index Test	RR	PLR	NLR
Apelqvist ¹²	1151	61	75 (40-92)	DFU	Measurable ankle pressure	1.12 (0.80-1.55)	1.02	0.86
Elgzyri ¹³	478	60	74 (IQR 66-80)	DFU	Intermittent claudication	1.25 (1.16-1.36)	1.59	0.81
Elgzyri et al ¹⁴	602	60	76 (36-95)	DFU	Ankle pressure > 50 mmHg Toe pressure > 30 mmHg	1.60 (1.04-2.47) 1.13 (0.96-1.33)	1.08 1.12	0.48 0.88
Bunt ¹⁶	147			Pedal sepsis	Palpable pedal pulses Diminished/absent pedal pulses and TcPO ₂ > 30 mmHg	2.26 (2.05-2.49) 1.69 (1.08-2.64)	NS 1.60	0.65 0.29
Holstein ¹⁷	32	68		DFU	Toe pressure ≥ 30 mmHg; Ankle pressure ≥ 100 mmHg Skin perfusion pressure ≥ 40 mmHg	2.43 (1.62-3.64) 2.00 (2.00-2.00) 1.88 (1.48-2.39)	NS NS 6.40	0.28 0.40 0.40
Wallin ¹⁸	83			DFU OR gangrene	Ankle pressure ≥ 70 mmHg Toe pressure ≥ 20 mmHg Fluorescein toe slope ≥ 18 units	5.17 (2.08-12.89) 2.65 (1.41-4.97) 6.40 (2.16-18.98)	3.24 2.47 2.47	0.10 0.21 0.09
Kalani ²⁰	50	74	61 (12)	DFU	TcPO ₂ ≥ 25 mmHg Toe pressure ≥ 30 mmHg Toe pressure ≥ 45 mmHg	NS NS NS	10.03 5.00 2.88	0.16 0.88 0.64
Brechow ²¹	678		64 (11)	DFU	ABI > 0.9 and < 1.3	2.02 (1.40-2.91)	2.61	0.92
Faris ²²	61		72 (38-86)	DFU or gangrene	Skin perfusion pressure ≥ 40 mmHg	NS	4.86	0.03
Gershater ¹⁵	2511	59	68 (15)	DFU	Ankle pressure ≥ 80 mmHg Ankle pressure ≥ 50 mmHg Toe pressure ≥ 45 mmHg Toe pressure ≥ 30 mmHg	2.67 (2.41-2.97) 3.31 (2.71-4.05) 2.86 (2.62-3.12) 1.85 (1.61-2.14)	2.52 1.46 4.30 1.28	0.24 0.15 0.25 0.33
Wang ²³	ABI group 2376; TcPO ₂ group 3789.	ABI group—pooled mean 59.6; TcPO ₂ group—pooled mean 70	ABI group—pooled mean 60.7; TcPO ₂ group—pooled mean 69.67	DFU	ABI ≥ 0.8 TcPO ₂ ≥ 30 mmHg	Diagnostic odds ratio for healing 1.02 (0.40-2.65) Diagnostic odds ratio for healing 15.81 (3.36-74.45)	1.00 5.14	1.00 0.33

(Continues)

TABLE 4 (Continued)

Source	N (DFU)	Proportion Men (%)	Age (y) Mean (SD) or (Range)	Population	Index Test	RR	PLR	NLR
Fagher ²⁴	236	69.9	76 (69-82)	DFU	TcPO ₂ ≥ 25 mmHg	2.98 (1.13-7.86)	1.21	0.33
Jeon ²⁵	137	58	61 (13)	DFU	ABI ≥ 0.9	2.92 (1.76-4.84)	2.58	0.29
Rajagopalan ²⁶	564	380/564 = 67.4% Men	Mean age 58.23 ± 10.11 y	All diabetic patients with Wagner II and III foot ulcers	ABI >0.9 TcPO ₂ > 40 mmHg	Sensitivity 41.5% Specificity 97% Sensitivity 43.6% Specificity 84%	13.83 2.73	0.6 0.67

Abbreviations: dABPI, doppler ankle brachial pressure index; DM, diabetes mellitus; DSA, digital subtraction angiography; DUS, duplex ultrasound; NA, not applicable (cannot be calculated); NLR, negative likelihood ratio; NS, not stated; oABPI, oscillometric ankle brachial pressure index; PLR positive likelihood ratio; PN+, with peripheral neuropathy; PN-, without peripheral neuropathy; SD, standard deviation; TBI, toe brachial index.

of 0.1, suggesting that the chance of *not* healing was increased if the ankle pressure was below 70 mmHg.¹⁸ Four studies that evaluated ABI (normal defined as threshold greater than or equal to 0.8, greater than or equal to 0.9, or between 0.9 and 1.3,) yielded variable results.^{23,21,24,25} The ABI was not strongly predictive of healing (PLR 1.0-3.09; NLR 0.29-1.0) in two studies^{21,25} as well as in the systematic review of Wang et al,²³ with poor ability to rule in or rule out the outcomes of interest as reflected by the low magnitude of the PLR and NLR (PLR range 1.0-3.09; NLR range 0.29-1.0). However, a third study of 564 patients with Wagner grade II or III ulcers found ABI > 0.9 strongly predictive of healing (PLR 13.83) but with a trade-off for a poor NLR (0.6), ie, the ABI could not predict well who did not heal.²⁶

3.7.3 | Toe pressure

The use of toe pressure to predict healing was examined at thresholds of greater than or equal to 30 mmHg in four papers,^{14-17,20} with a PLR between 1.12 and 5.00; the NLR was between 0.28 and 0.88. When the threshold was increased to greater than or equal to 45 mmHg,^{15,20} there was little difference in the magnitude of the PLR (PLR 2.88 and 4.30) Table 4.

3.7.4 | Skin perfusion pressure

A threshold skin perfusion pressure of greater than or equal to 40 mmHg was associated with moderately good performance for prediction of healing in two studies (PLR 4.86 and 6.40, with NLRs of 0.03-0.40).^{17,22}

3.7.5 | Transcutaneous oxygen pressure

At a threshold of 22.5 to 30 mmHg, TcPO₂ was shown to have a moderate performance for prediction of healing in three studies (PLR 10.63, 4, and 1.21; NLR 0.16, 0.33, and <0.1).^{20,24,26} The systematic review of Wang reported a pooled PLR of 5.14 and a NLR of 0.33 using a TcPO₂ cut-off of less than 30 mmHg.²³

3.7.6 | Fluorescein toe slope

Fluorescein angiography may be used as a marker of tissue perfusion, as the distribution of fluorescence in the skin after intravenous administration of fluorescein is related to the distribution of blood flow. One study evaluating the use of fluorescein toe slope in comparison with ankle pressure > 70 mmHg or toe pressure > 20 mmHg¹⁸ found a similar performance when comparing the three tests. For a toe slope of less than 18 units, the PLR was 2.47, and NLR was 0.09. This means that it only has a minor ability to predict healing but may be useful to indicate those that will not heal.

3.8 | Non-invasive tests to predict major lower limb amputation

Eight studies (including the systematic review of Wang et al) evaluated non-invasive bedside tests for the prediction of major amputation (amputation of the leg proximal to the ankle), Table 5.^{23,15,19,21,24-26,18}

3.8.1 | Ankle pressure or ankle brachial index

Two studies evaluated ankle pressures as predictors of major amputation (amputation of the leg proximal to the ankle).^{18,15} In one study, ankle pressures of less than 50 and less than 80 mmHg were compared within the same cohort. When the lower threshold was used, there was increased specificity (84% vs 79%), but this was at the cost of reduced sensitivity (20% vs 39%). The higher threshold of less than 80 mmHg performed slightly better (PLR 1.89 vs 1.25; NLR 0.77 vs 0.95)¹⁵ with regard to the prediction of major amputation. Another study used a cut-off value of less than 70 mmHg, which gave an improved performance with a PLR of 4.28, which corresponds with an increase in the likelihood of major amputation of greater than 25%.¹⁸

One study evaluated ankle brachial index (ABI) as a predictor of major amputation and concluded that a threshold of ABI < 0.6 performed best, with a PLR of 68 corresponding to a very high increased probability of major amputation. The NLR was 0.32. This prospective study was performed in a cohort of 564 patients in India with diabetic foot ulceration of which only 15% had PAD (defined as ABI < 0.9 or TcPO₂ < 40).²⁶ In the systematic review of Wang et al,²³ a threshold less than 0.8 was used, which yielded a relatively small change in the probability of limb amputation (PLR 1.93-3.5; NLR 0.39-0.66).

When in one study the combination of an ankle pressure < 50 mmHg or an ABI < 0.5 was evaluated, this was shown to have strong ability to both rule in and rule out major amputation in a further study,²¹ with a PLR of 8.24, representing a 40% increased probability of amputation and with a NLR of 0.14.

3.8.2 | Toe pressure

A study by Gershtater et al compared toe pressure thresholds of less than 30 mmHg and less than 45 mmHg and found them broadly equivalent in predicting major amputation (PLR 2.64 and 2.05).¹⁵ When this threshold was reduced to less than 20 mmHg in a different study,¹⁸ the PLR was improved to 3.18, which increases the probability of amputation by around 15% to 20%, but with a corresponding NLR of 0.49, reflecting poor ability to rule out major amputation.

3.8.3 | Transcutaneous oxygen pressure

In the two studies on TcPO₂, a value less than 22.5 to 25 mmHg had a PLR of 3.41 and less than 10, with an NLR of 0.51 and 0.25.^{24,26} In

the systematic review of Wang et al, the pooled PLR and NLR were 1.79 and 0.43, respectively.²³

3.8.4 | Fluorescein toe slope

In a study of 83 patients with foot ulcers, fluorescein toe slope (the rate of fluorescence on the hallux during the first 10 seconds of its appearance on the toe) less than 18 units was found to have a reasonable prognostic accuracy (PLR 4.04, NLR 0.49), which corresponds to an increase in likelihood of major amputation of around 25%.¹⁸ This was comparable with the use of ankle pressure (<70 mmHg) and toe pressure (<20 mmHg) in the same study.

3.8.5 | Doppler waveform analysis

One study evaluated the use of Doppler waveform analysis and found that the absence of flow or monophasic signal in the below-knee vessels modestly increased the probability of amputation (PLR 2.18).¹⁹ This was less informative than other tests such as fluorescein toe slope < 18 units, toe pressure < 20 mmHg and combined ABI < 0.9 and ankle pressure < 50 mmHg.

- Evidence statement: The following tests increased the probability of healing of a diabetic foot ulcer by greater than 25% in at least one study: a toe pressure ≥ 30 mmHg, a TcPO₂ ≥ 22.5 -25 mmHg, and a skin perfusion pressure ≥ 40 mmHg.
- Quality of evidence: Moderate, not all studies obtained consistent results.
- Evidence statement: The following tests increased in at least one study the probability of a major amputation in a patient with a diabetic foot ulcer by greater than 25%: ankle pressure < 70 mmHg, ABI < 0.6, TcPO₂ < 25 mmHg, and a fluorescein toe slope < 18 units. The combination of ABI < 0.5 and ankle pressure < 50 mmHg improved this to around 40% in one study.
- Quality of the evidence: Moderate, not all studies obtained consistent results.

4 | DISCUSSION

This updated systematic review evaluates the performance of six non-invasive prognostic bedside tests (in addition to common clinical examination findings) to predict the likelihood of wound healing or major amputation in patients with diabetes and foot ulceration. While we know that the presence of PAD increases the risk of poor outcomes in a patient with foot ulceration, only a subset of patients will experience them. Although major advances have been made in treating PAD in patients with DFU, both endovascular and open surgical revascularization procedures are not without risk. A prognostic test that assesses the severity of the perfusion deficit while also informing health care professionals (and patients) about the probability of

TABLE 5 Characteristics of included studies evaluating PAD measures for major amputation

Source	N (DFU)	Proportion Men, %	Age (y), mean (SD) or (Range)	Population	Index Test	RR	PLR	NLR
Wallin ¹⁸	83			DFU OR gangrene	Ankle pressure < 70 mmHg Toe pressure < 20 mmHg Fluorescein toe slope < 18 units	4.53 (2.22-9.26) 3.48 (1.65-7.32) 3.69 (1.99-6.86)	4.28 3.18 4.04	0.41 0.49 0.49
Brechow ²¹	678		64 (11)	DFU	ABI < 0.5 or ankle pressure < 50 mmHg	25.00 (13.5-41.92)	8.24	0.14
Gershater ¹⁵	2511	59	68 (15)	DFU	Ankle pressure < 80 mmHg Ankle pressure < 50 mmHg Toe pressure < 45 mmHg Toe pressure < 30 mmHg	2.26 (1.71-2.97) 1.29 (0.92-1.80) 2.98 (2.28-3.91) 3.24 (2.48-4.24)	1.89 1.25 2.05 2.64	0.77 0.95 0.62 0.71
Tsai ¹⁹	97	55	65 (3)	DFU AND dialysis	Poor monophasic waveform or absence of flow in below knee vessels	7.61 (NS)	2.18	0.20
Wang ²³	ABI group 2376; TcPO2 group 3789.	ABI group-pooled mean 59.6; TcPO2 group-pooled mean 70	ABI group-pooled mean 60.7; TcPO2 group-pooled mean 69.67	DFU	ABI < 0.8 TcPO2 < 30 mmHg	Diagnostic odds ratio 2.89 (1.65-5.05) Diagnostic odds ratio 4.14 (2.98-5.76)	1.93 1.79	0.66 0.43
Fagher ²⁴	236	69.9	76 (69-82)	DFU	TcPO2 ≤ 25 mmHg	5.53 (2.36-12.97)	3.41	0.51
Jeon ²⁵	137	58	61 (13)	DFU	ABI < 0.9	3.10 (1.93-4.99)	3.45	0.39
Rajagopalan ²⁶	564	380/564 = 67.4% Men	Mean age 58.23 ± 10.11 years	DFU	ABI < 0.6 TcPO2 < 22.5	Sensitivity 68% Specificity 99% Sensitivity 75% Specificity 100%	68 68	0.32 0.25

Abbreviations: dABPI, doppler ankle brachial pressure index; DM indicates diabetes mellitus; DSA, digital subtraction angiography; DUS, duplex ultrasound; SD, standard deviation; NA, not applicable (cannot be calculated); NLR, negative likelihood ratio; NS, not stated; oABPI, oscillometric ankle brachial pressure index; PN+, with peripheral neuropathy; PN-, without peripheral neuropathy; PLR, positive likelihood ratio; TBI, toe brachial index.

a specified clinical outcome (such as healing or major amputation) would be a useful tool in clinical decision making. It is often not feasible, or necessary, to perform vascular imaging on every patient with a foot ulcer and diabetes when they first present. However, it would be useful for the treating clinician to identify those patients with a higher probability of healing without revascularization, in order to pursue a conservative approach in the first instance. Similarly, if a patient is identified as having an unacceptably high probability of major amputation, urgent investigation and revascularization should be considered.

The data reviewed here were heterogeneous, as were the patient cohorts, with probably important differences in wound and patient characteristics, and it is not surprising that no single test performed consistently well across these studies. The presence of palpable foot pulses was associated with future healing in one study, but this report was difficult to interpret, and the absence of foot pulses does not necessarily mean that an ulcer will not heal, stressing the importance of non-invasive tests. The most useful tests to inform on the probability of healing were skin perfusion pressure ≥ 40 mmHg, toe pressure ≥ 30 mmHg, or TcPO₂ ≥ 25 mmHg. With these thresholds, all of these tests increased the probability of healing by greater than 25% in at least one study. When such results are obtained, it would be reasonable to undertake an initial period of conservative management, particularly if the patient has a relatively high pretest probability of healing (eg, a superficial wound with no evidence of infection).

Although sometimes thought to be the reverse of each other, wound healing and major amputation are different outcomes and can have different determinants. When considering tests to predict major amputation, the most useful were ankle pressure < 50 mmHg, ABI < 0.5 , toe pressure < 30 mmHg, and TcPO₂ < 25 mmHg. In addition, fluorescein toe slope < 18 units performed to a similar standard. Again, all of these tests increased the probability of major amputation by around 25% in at least one study, and the combination of ABI less than 0.5 and ankle pressure < 50 mmHg improved this to around 40%. Therefore, patients in whom these criteria are met could be considered at higher risk of limb loss when compared with those with a less severe perfusion deficit. These patients should be considered for urgent vascular imaging and revascularization at an early stage of the clinical management of their DFU. However, the use of ABI and ankle pressures in this cohort should be interpreted with a degree of caution. It is well recognized that patients with a supranormal ABI are at increased risk of mortality and that a high ABI represents incompressible arteries rather than high intraluminal pressure.^{29-30,35} It is estimated that 30% to 40% of patients with diabetes have significant medial artery calcification,^{31,32} which leads to incompressible vessels and abnormally high ABI. Only some of the studies assessing ABI or ankle pressures excluded patients with abnormally high readings suggestive of incompressible vessels. For example, the systematic review by Wang et al defined abnormal ABI as less than 0.8, whereas Bunt and colleagues recognized ABI > 1.3 , closing pressure > 200 mmHg, or incompressible vessels to be abnormal and a sign of mediasclerosis.²³ However, the important finding of our review was that low ABI or ankle pressure was useful to predict the likelihood of amputation, but normal results were not useful when predicting the likelihood of wound healing.

The use of a major amputation as an endpoint has certain limitations, as it is a procedure and not an endpoint in the strict sense. The reason for the procedure is rarely indicated—for example, it may be required for sepsis control in a patient in whom revascularization has been successful or conversely for a patient with minor tissue loss but intractable pain because of unsuccessful revascularization or no-option ischaemia. Treatment methods and technologies have changed substantially since 1980, and there is now in our experience a greater propensity to perform minor amputation following revascularization (including multiple attempts) rather than primary major amputation. In addition, patients included in a prospective study frequently already have a history of prior foot disease; it is therefore impossible to determine where in the disease process an individual patient is, and frequently, there is no information whether an intervention prior inclusion in a study has been performed. Finally, the occurrence of outcomes such as wound healing and major amputation can be affected by the duration of follow-up, which varied between studies.

In patients with diabetes, PAD and foot ulceration, impaired perfusion is usually only one of the factors contributing to the risk of nonhealing and amputation, and the outcome of the ulcer does not rely simply on improving foot perfusion. For instance, in patients who had a lower extremity bypass because of critical limb ischemia (59% had diabetes), more than half of the major amputations during follow-up were performed in patients with a patent bypass.³³ There is clearly a need for further understanding of the contribution of perfusion deficit to the prognosis of patients with a diabetic foot ulcer and the interaction with other local and systemic factors. Bedside tests of perfusion should not be used in isolation, and most guidelines have moved towards multifactorial tools to assess prognosis, which also include other important contributing factors such as infection and wound characteristics. Any prognostic test of PAD severity described in this review should therefore be combined with the evaluation of infection and wound characteristics in order to provide a more meaningful measure of prognosis that encompasses all of the relevant components of DFU. These systems, such as the WiFi classification, require each domain to be graded according to severity, allowing an overall risk category to be calculated as addressed elsewhere in this issue.³ In addition, it is recognized that the combination of more than one test (ie, serial testing) may provide more useful information on the likely prognosis than a single test or tests used in isolation (parallel test). However, this approach was not reported among the majority of the studies included here, and this lack of information is a weakness of our review.

Nevertheless, knowledge of the performance of non-invasive bedside tests to predict outcome allows a better understanding of the potential for wound healing or the probability of major amputation and remains a valuable tool for health care professionals involved in the management of patients with diabetes and foot ulceration. However, relevant data are limited and heterogeneous, and studies are often of relatively poor quality. In order to address this, more effort is required to produce well-designed studies, to use standardized data sets, and to develop international registries, which will more accurately inform on the factors most strongly predictive of poor outcomes. Although

developed as guidance for intervention studies, standards of reporting in this area were formulated by a joint team of the IWGDF and European Wound Management Association, which future researchers can use as starting point.³⁴

5 | CONCLUSIONS

Among the 15 studies included in this review, comprising almost 6800 patients with a diabetic foot ulcer, the presence of severe perfusion deficit (ankle pressure < 50 mmHg, ABI < 0.5, toe pressure < 30 mmHg, and TcPO₂ < 25 mmHg) was associated with greater than 25% increased risk of major amputation, while a better perfused foot (skin perfusion pressure ≥ 40 mmHg, toe pressure ≥ 30 mmHg, or TcPO₂ ≥ 25 mmHg) was found to be more likely to heal. These measures of PAD may be used as a guide when deciding management of patients, and the likelihood of healing or major amputation can be incorporated into the decision to pursue conservative management or a further vascular assessment potentially leading to revascularization. However, these measures should be used in the wider context, acknowledging the contribution of other clinical predictors of the outcome of a foot ulcer. Further research is required to more accurately evaluate the role of bedside tests of PAD in the prognosis of patients with diabetes and foot ulceration.

ACKNOWLEDGEMENTS

We would like to thank the following external experts for their review of our PICO for clinical relevance: Stephan Morbach (Germany), Heidi Corcoran (Hongkong), Vilma Urbančič (Slovenia), Rica Tanaka (Japan), Florian Dick (Switzerland), Taha Wassila (Egypt), Abdul Basit (Pakistan), Yamile Jubiz (Colombia), Sriram Narayanan (Singapore), and Eduardo Alvarez (Cuba). We would like to thank Sicco Bus (on behalf of the IWGDF editorial board) and Kim Houlind (independent external expert) for their peer review of the manuscript.

We would also like to thank Jack Brownrigg for his input in the previous version of this systematic review.

CONFLICT OF INTEREST

Production of the 2019 IWGDF Guidelines was supported by unrestricted grants from Molnlycke Healthcare, Acelity, ConvaTec, Urgo Medical, Edixomed, Klaveness, Reaplix, Podartis, Aurealis, SoftOx, Woundcare Circle, and Essity. These sponsors did not have any communication related to the systematic reviews of the literature or related to the guidelines with working group members during the writing of the guidelines and have not seen any guideline or guideline-related document before publication. All individual conflict of interest statement of authors of this guideline can be found at <https://iwgdfguidelines.org/about-iwgdf-guidelines/biographies/>.

AUTHOR CONTRIBUTIONS

Rachael F. performed the literature search; screened the titles, abstracts, and full papers; assessed the literature; extracted data; drew conclusions for the PICO; completed the evidence tables; and wrote the manuscript. J.A. checked the evidence table and reviewed the

manuscript. E.B. assessed the literature, extracted data, checked and revised the evidence tables, and reviewed and critically revised the manuscript. Robert F. screened the abstracts, assessed the literature, extracted data, checked and revised the evidence tables, and reviewed the manuscript. J.P.H. checked the evidence tables and reviewed the manuscript. K.K. checked the evidence tables and reviewed the manuscript. J.L.M. extracted data, checked the evidence tables, and reviewed the manuscript. S.N. checked the evidence tables and reviewed the manuscript. J.R. checked the evidence tables and reviewed the manuscript. M.V. checked the evidence tables and reviewed the manuscript. R.E.Z. extracted data, checked the evidence tables, and reviewed the manuscript. N.C.S. assessed the literature, drew conclusions for the PICO, checked and revised the evidence tables, and reviewed and critically revised the manuscript. R.J.H. reviewed and provided final consensus for the data extraction, drew conclusions for the PICO, and reviewed and critically revised the manuscript. Rachael F. acted as secretary of the working group and R.J.H. as chair of the working group. All authors take full responsibility for the content of the publication.

ORCID

Rachael O. Forsythe  <https://orcid.org/0000-0002-3311-9599>

Nicolaas C. Schaper  <https://orcid.org/0000-0002-2128-8029>

REFERENCES

- Prompers L, Schaper N, Apelqvist J, Edmonds M, Jude E, Mauricio D, et al. Prediction of outcome in individuals with diabetic foot ulcers: focus on the differences between individuals with and without peripheral arterial disease. The EURODALE Study. *Diabetologia*. Springer-Verlag; 2008 Feb 23;51(5):747–55.
- Forsythe RO, Apelqvist J, Boyko EJ, et al. Effectiveness of bedside investigations to diagnose peripheral artery disease among people with diabetes mellitus: A systematic review. *Diabetes Metab Res Rev*. 2020;36(S1):e3277.
- Monteiro-Soares M, Russell D, Boyko EJ, et al. Guidelines on the classification of diabetic foot ulcers (IWGDF 2019). *Diabetes Metab Res Rev*. 2020;36(S1):e3273.
- Brownrigg JRW, Hinchliffe RJ, Apelqvist J, et al. Performance of prognostic markers in the prediction of wound healing or amputation among patients with foot ulcers in diabetes: a systematic review. *Diabetes Metab Res Rev*. John Wiley & Sons. Ltd. 2016 Jan 26;32(1):128–135.
- Moher D, Liberati A, Tetzlaff J, Altman DG, PRISMA Group. Preferred reporting items for systematic reviews and meta-analyses: the PRISMA statement. *J Clin Epidemiol*. 2009;62:1006–1012.
- Garner P, Hopewell S, Chandler J, et al. When and how to update systematic reviews: consensus and checklist. *BMJ: British Medical Journal*. British medical journal publishing. Group. 2016;354.
- Bus SA, van Netten JJ, Hinchliffe RJ, Apelqvist J, Lipsky BA, Schaper NC, IWGDF Editorial Board. Standards for the development and methodology of the 2019 International Working Group on the Diabetic Foot guidelines. *Diabetes Metab Res Rev*. 2020;36(S1):e3267
- Jaeschke R, Guyatt GH, Sackett DL, et al. Users' guides to the medical literature: III. How to use an article about a diagnostic test B. What are the results and will they help me in caring for my patients? *JAMA. American Medical Association*. 1994 Mar 2;271(9):703–707.
- Deeks JJ. Systematic reviews in health care—systematic reviews of evaluations of diagnostic and screening. *British Medical Journal BMJ Publishing Group*. 2001;323(7305):157–162.
- Hayden SR, Brown MD. Likelihood ratio: a powerful tool for incorporating the results of a diagnostic test into clinical decisionmaking. *Ann Emerg Med*. 1999 May;33(5):575–580.

11. Harbour R, Miller J, Guidelin SI. A new system for grading recommendations in evidence based guidelines. *British Medical Journal*. British Medical Journal Publishing. Group. 2001;323(7308):334-336.
12. Apelqvist J, Elgzyri T, Larsson J, Loendahl M, Nyberg P, Thorne J. Factors related to outcome of neuroischemic/ischemic foot ulcer in diabetic patients. *J Vasc Surg*. 2011 Jun;53(6):1582-1588.
13. Elgzyri T, Larsson J, Nyberg P, Thorne J, Eriksson K-F, Apelqvist J. Early revascularization after admittance to a diabetic foot center affects the healing probability of ischemic foot ulcer in patients with diabetes. *Eur J Vasc Endovasc Surg*. 2014 Aug 5;48(4):440-446.
14. Elgzyri T, Larsson J, Thorne J, Eriksson K-F, Apelqvist J. Outcome of ischemic foot ulcer in diabetic patients who had no invasive vascular intervention. *Eur J Vasc Endovasc Surg*. 2013 Jul;46(1):110-117.
15. Gershater MA, Londahl M, Nyberg P, Larsson J, Thorne J, Eneroth M, et al. Complexity of factors related to outcome of neuropathic and neuroischaemic/ischaemic diabetic foot ulcers: a cohort study. *Diabetologia*. Springer-Verlag; 2008 Nov 27;52(3):398-407.
16. Bunt TJ, Holloway GA. TcPO₂ as an accurate predictor of therapy in limb salvage. *Ann Vasc Surg*. 1996 May;10(3):224-227.
17. Holstein P, Lassen NA. Healing of ulcers on the feet correlated with distal blood pressure measurements in occlusive arterial disease. *Acta Orthop Scand*. 1980 Dec;51(6):995-1006.
18. Wallin L, Björnsson H, Stenström A. Fluorescein angiography for predicting healing of foot ulcers. *Acta Orthop Scand*. 1989 Feb;60(1):40-44.
19. Tsai C-Y, Chu S-Y, Wen Y-W, et al. The value of Doppler waveform analysis in predicting major lower extremity amputation among dialysis patients treated for diabetic foot ulcers. *Diabetes Res Clin Pract*. 2013 May;100(2):181-188.
20. Kalani M, Brismar K, Fagrell B, Ostergren J, Jörneskog G. Transcutaneous oxygen tension and toe blood pressure as predictors for outcome of diabetic foot ulcers. *Dia Care American Diabetes Association*. 1999 Jan 1;22(1):147-151.
21. Brechow A, Slesaczeck T, Münch D, et al. Improving major amputation rates in the multicomplex diabetic foot patient: focus on the severity of peripheral arterial disease. *Ther Adv Endocrinol Metab*. 2013 Jun;4(3):83-94.
22. Faris I, Duncan H. Skin perfusion pressure in the prediction of healing in diabetic patients with ulcers or gangrene of the foot. *J Vasc Surg*. 1985 Jul;2(4):536-540.
23. Wang Z, Hasan R, Firwana B, et al. A systematic review and meta-analysis of tests to predict wound healing in diabetic foot. *J Vasc Surg*. 2016 Feb;63(2):29S-U99.
24. Fagher K, Katzman P, Londahl M. Transcutaneous oxygen pressure as a predictor for short-term survival in patients with type 2 diabetes and foot ulcers: a comparison with ankle-brachial index and toe blood pressure. *Acta Diabetol Springer Milan*. 2018 Aug;55(8):781-788.
25. Jeon B-J, Choi HJ, Kang JS, Tak MS, Park ES. Comparison of five systems of classification of diabetic foot ulcers and predictive factors for amputation. *Int Wound J*. 3rd ed. John Wiley & Sons, Ltd (10.1111); 2017 Jun 1;14(3):537-45.
26. Rajagopalan C, Viswanathan V, Rajsekar S, Selvaraj B, Daniel L. Diabetic foot ulcers-comparison of performance of ankle-brachial index and transcutaneous partial oxygen pressure in predicting outcome. *Diabetes Metab Res Rev Springer India*. 2018 Apr;38(2):179-184.
27. Faris I, Duncan H. Skin perfusion pressure in the prediction of healing in diabetic patients with ulcers or gangrene of the foot. *J Vasc Surg Mosby*. 1985 Jul 1;2(4):536-540.
28. Jeon B-J, Choi HJ, Kang JS, Tak MS, Park ES. Comparison of five systems of classification of diabetic foot ulcers and predictive factors for amputation. *Int Wound J*. 3rd Ed. 2017 Jun;14(3):537-545.
29. Resnick HE, Lindsay RS, McDermott MM, Devereux RB, Jones KL, Fabsitz RR, et al. Relationship of high and low ankle brachial index to all-cause and cardiovascular disease mortality: the Strong Heart Study. *Circulation*. Lippincott Williams & Wilkins; 2004 Feb 17;109(6):733-9.
30. Smith CD, Bilmen JG, Iqbal S, Robey S, Pereira M. Medial artery calcification as an indicator of diabetic peripheral vascular disease. *Foot Ankle Int*. 2008 Feb;29(2):185-190.
31. Prompers L, Huijberts M, Apelqvist J, Jude E, Piaggese A, Bakker K, et al. High prevalence of ischaemia, infection and serious comorbidity in patients with diabetic foot disease in Europe. Baseline results from the Eurodiale study. *Diabetologia*. Springer-Verlag; 2007 Jan;50(1):18-25.
32. Faglia E, Favales F, Quarantiello A, et al. Angiographic evaluation of peripheral arterial occlusive disease and its role as a prognostic determinant for major amputation in diabetic subjects with foot ulcers. *Dia Care American Diabetes Association*. 1998 Apr;21(4):625-630.
33. Simons JP, Goodney PP, Nolan BW, et al. Failure to achieve clinical improvement despite graft patency in patients undergoing infrainguinal lower extremity bypass for critical limb ischemia. *J Vasc Surg*. 2010 Jun;51(6):1419-1424.
34. Jeffcoate WJ, Bus SA, Game FL, Hinchliffe RJ, Price PE, Schaper NC. Reporting standards of studies and papers on the prevention and management of foot ulcers in diabetes: required details and markers of good quality. *Lancet Diabetes Endocrinol Elsevier*. 2016 Sep 1;4(9):781-788.
35. Allison MA, Hiatt WR, Hirsch AT, Coll JR, Criqui MHA. High ankle-brachial index is associated with increased cardiovascular disease morbidity and lower quality of life. *Journal of the American College of Cardiology*. 2008 Apr 1;51(13):1292-1298.

SUPPORTING INFORMATION

Additional supporting information may be found online in the Supporting Information section at the end of this article.

How to cite this article: Forsythe RO, Apelqvist J, Boyko EJ, et al. Performance of prognostic markers in the prediction of wound healing or amputation among patients with foot ulcers in diabetes: A systematic review. *Diabetes Metab Res Rev*. 2020;36(S1):e3278. <https://doi.org/10.1002/dmrr.3278>